



PITLOCHRY  
FESTIVAL  
THEATRE

# SEASON 2023 SUMMER

*"From the start it has been theatre's business to entertain people."*

Bertolt Brecht

|         |                             |
|---------|-----------------------------|
| 1       | <b>Welcome</b>              |
| 2 - 5   | <b>Auditorium</b>           |
| 6       | <b>Festival memberships</b> |
| 7 - 10  | <b>Summer Diary</b>         |
| 11      | <b>Multi-Show Pass</b>      |
| 12 - 13 | <b>Studio</b>               |
| 14 - 15 | <b>Amphitheatre</b>         |
| 16 - 17 | <b>Concerts</b>             |

## Hello!

We cannot wait to welcome you back to Pitlochry Festival Theatre for our 2023 Summer Season. It promises to be full of laughter, drama and excitement made with a fantastic ensemble of talented artists.

This year we kick off with *Gypsy*, one of the greatest musicals of all time. And we have lots more dazzling musical joy to delight throughout the year, including a brand-new musical in our Studio called *Forever Home* and a programme of homegrown and visiting musical concerts throughout the summer.

We are also going to fill our stages with award winning classics. *A Streetcar Named Desire* and *Brief Encounter* are powerful and moving productions where you will get the opportunity to spend time with some of the world's most iconic characters.

We continue our commitment to produce brave new Scottish works as well. In each of our spaces we will make new plays for you to enjoy. First up, a new version of *The Secret Garden* in our Amphitheatre, followed by *The Great Replacement* in our recently opened Studio, and *Group Portrait in a Summer Landscape* in our Auditorium to end the season. You'll also have another chance to catch *The Maggie Wall* and *Sherlock Holmes - A Lesson in Lipstick, Ketchup and Blood*. They were so successful last year that we are reviving and touring them this year!

Pitlochry Festival Theatre is at its best when its full of people and life and activity. As well as joining us for a production there are so many other ways to get involved. We have lots of activities for people of all ages to explore their own creativity. For instance, this summer you can celebrate the holidays by joining us for early years and primary Festival Theatre Make and Play sessions. All the information can be found on our website or you can come in and talk to our Box Office team. If you're an artist (of any sort!) there are various programmes, schemes and projects for you to work with us all year round too. Our next Artist Open Day is on the 25th of March. We hope to see you there!

**Elizabeth Newman**

Artistic Director



*"How pretty the sky is!  
I ought to go there on a rocket that never comes down."*

Blanche, *A Streetcar Named Desire*  
Tennessee Williams



# Auditorium

See pages 7-10 for  
performance dates



**19 May - 30 September**  
**2pm & 8pm**

Gypsy is one of the greatest and most dazzling of all musicals. Based on the tantalising memoir of famous striptease artist Gypsy Rose Lee, it tells the story of ambitious showbiz mother Rose, who travels across America with her daughters, Baby June and Louise, in search of success with their homemade vaudeville act.

When Baby June leaves the act to elope, Rose vows to make introverted Louise into a star, and will do almost anything to see her daughter break into the big time.

Prepare to fall in love again with iconic songs, including *Some People*, *Let Me Entertain You*, and the show-stopping *Everything's Coming Up Roses*.

Book by **Arthur Laurents**

Music by **Jule Styne**

Lyrics by **Stephen Sondheim**

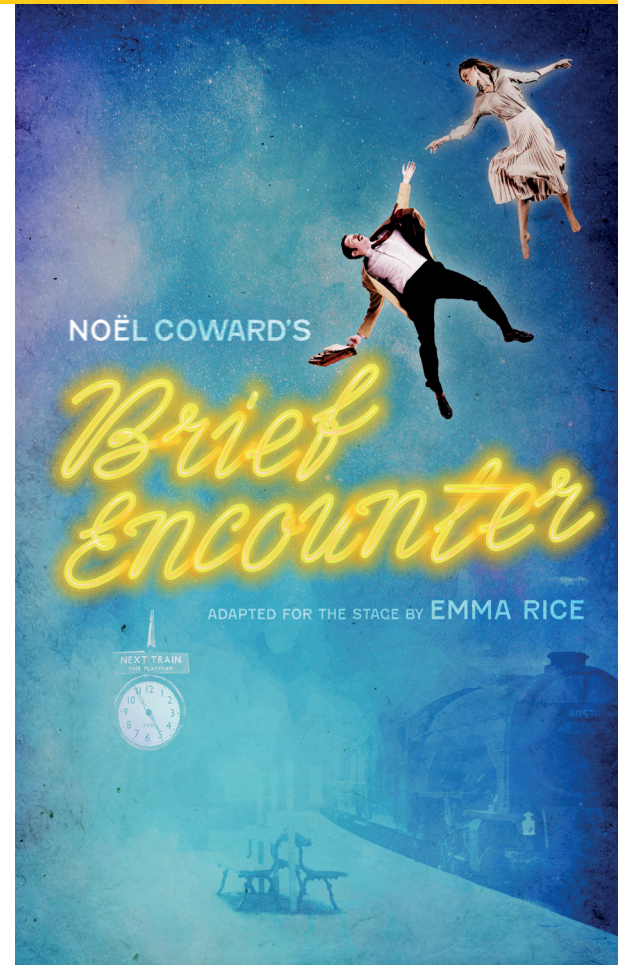
Suggested by

***The Memoirs of Gypsy Rose Lee***

Original production by

**David Merrick & Leland Hayward**

Entire production originated and choreographed by **Jerome Robbins**



**16 June - 29 September**  
**2pm & 8pm**

Respectable housewife Laura and idealistic doctor Alec meet by chance at a railway station. Although they are both already married, they continue to meet every Thursday in the station café. Their friendship soon develops into something more emotionally fulfilling than either expected, and they wrestle with the potential havoc their deepening relationship would have on their lives and the lives of those they love.

As they come to realise that their love is impossible, they must deal with the torment that comes from a love doomed never to find fulfilment.

Get ready to be transported to another time, another place by this delightful and joyful adaptation of a true classic romance.

Original music composed by  
**Stu Barker**



## A STREETCAR NAMED DESIRE BY TENNESSEE WILLIAMS



2 June - 30 September  
2pm & 8pm

*A Streetcar Named Desire* is one of the most critically acclaimed and extraordinary plays of the twentieth century. Ready yourselves for a sizzling night out.

After losing her family home and prosperous life, former southern belle Blanche Dubois moves into the shabby apartment of her younger sister Stella and her husband Stanley Kowalski in a poor neighbourhood in New Orleans.

Blanche and Stanley take an immediate dislike to one another. The conflict between them heats up as Blanche attempts to convince her sister to leave her abusive husband. Tensions mount with tragic consequences for Blanche.

*Presented by special arrangement with  
The University of the South,  
Sewanee, Tennessee.*

## GROUP PORTRAIT IN A SUMMER LANDSCAPE



25 August - 28 September  
2pm & 8pm

Written by **Peter Arnott**

This intense and riveting story is set in a Perthshire country house during the Scottish Independence referendum of 2014. It revolves around retired academic and political heavyweight George Rennie and his fractured family and former students, coming together for a dramatic reckoning. There are secrets to be exposed.

The play is an exploration of a way of life which is coming to its end, a family struggling to connect in the wake of political pain, grief and the beginnings and ends of great love affairs.

Expect a bold, funny and deeply thoughtful play about family and the forces that shaped the country we live in today.

*A co-production with  
The Royal Lyceum Theatre, Edinburgh.*





# Festival Memberships

Become a Member to show your support for Pitlochry Festival Theatre and enjoy popular benefits, including **early booking** and **discounts** on tickets and retail.

## Choose the level of membership that's right for you

### Festival Friends £40 annually

- 7 day priority booking
- Save 10% on 2 tickets per show
- 10% off retail purchases
- 2 Café vouchers for complimentary drink or snack
- Receive season brochure and announcements first
- Quarterly members e-Newsletters
- Save up to 25% on multi-buy packages

### Festival Circle £150 annually

- Friends' benefits, PLUS
- Household membership
- 14 day priority booking
- Save 15% on 4 tickets per show
- Save 10% on all Café purchases
- 50% off Tours

### There are many ways you can support us.

Every donation makes a difference to Pitlochry Festival Theatre. If you would like to chat about the benefits of giving more than £150, or would like to leave a legacy, please email [membership@pitlochryfestivaltheatre.com](mailto:membership@pitlochryfestivaltheatre.com) or call the box office.

Become a member today – call the Box Office on **01796 484626** or scan the code.



## Summer Diary

### May

|     |    |                               |     |
|-----|----|-------------------------------|-----|
| Fri | 19 | Gypsy                         | 8pm |
| Sat | 20 | Gypsy                         | 8pm |
| Tue | 23 | Greatest Musicals             | 8pm |
| Wed | 24 | Gypsy                         | 2pm |
|     |    | Gypsy                         | 8pm |
| Thu | 25 | West End Musical Extravaganza | 8pm |
| Sat | 27 | Gypsy                         | 2pm |
|     |    | Gypsy                         | 8pm |

### June

|     |    |                          |        |
|-----|----|--------------------------|--------|
| Fri | 2  | A Streetcar Named Desire | 8pm    |
| Sat | 3  | A Streetcar Named Desire | 8pm    |
| Tue | 6  | A Streetcar Named Desire | 8pm    |
| Wed | 7  | A Streetcar Named Desire | 2pm    |
|     |    | Gypsy                    | 8pm    |
| Thu | 8  | Gypsy                    | 8pm    |
| Fri | 9  | The Maggie Wall          | 7.30pm |
| Sat | 10 | The Maggie Wall          | 7.30pm |
| Wed | 14 | The Maggie Wall          | 7.30pm |
| Thu | 15 | The Maggie Wall          | 7.30pm |
| Fri | 16 | Brief Encounter          | 8pm    |
| Sat | 17 | Brief Encounter          | 8pm    |

### June (cont.)

|     |    |                               |        |
|-----|----|-------------------------------|--------|
| Sun | 18 | West End Musical Extravaganza | 2pm    |
| Tue | 20 | The Maggie Wall               | 7.30pm |
| Wed | 21 | The Maggie Wall               | 2.30pm |
|     |    | Brief Encounter               | 8pm    |
| Thu | 22 | Brief Encounter               | 2pm    |
|     |    | A Streetcar Named Desire      | 8pm    |
| Fri | 23 | Gypsy                         | 8pm    |
| Sat | 24 | Gypsy                         | 2pm    |
|     |    | Greatest Musicals             | 8pm    |
| Tue | 27 | A Streetcar Named Desire      | 8pm    |
| Wed | 28 | The Maggie Wall               | 2.30pm |
|     |    | Gypsy                         | 8pm    |
| Thu | 29 | Gypsy                         | 2pm    |
|     |    | West End Musical Extravaganza | 8pm    |
| Fri | 30 | Brief Encounter               | 8pm    |

### July

|     |   |                        |     |
|-----|---|------------------------|-----|
| Sat | 1 | Brief Encounter        | 2pm |
|     |   | Greatest Musicals      | 8pm |
| Sun | 2 | 80s Live!              | 8pm |
| Mon | 3 | A Play, A Pie & A Pint | 1pm |



## July (cont.)

|        |                                   |   |
|--------|-----------------------------------|---|
| Tue 4  | A Play, A Pie & A Pint 1pm        |   |
|        | Brief Encounter 8pm               |   |
| Wed 5  | A Play, A Pie & A Pint 1pm        |   |
| Thu 6  | A Play, A Pie & A Pint 1pm        |   |
|        | Gypsy 8pm                         |   |
| Fri 7  | A Play, A Pie & A Pint 1pm        |   |
|        | The Secret Garden 2pm             |   |
|        | A Streetcar Named Desire 8pm      |   |
| Sat 8  | A Play, A Pie & A Pint 1pm        |   |
|        | The Secret Garden 2pm             |   |
|        | A Streetcar Named Desire 8pm      |   |
| Tue 11 | Brief Encounter 8pm               |   |
| Wed 12 | The Secret Garden 2pm             |   |
|        | Gypsy 8pm                         |   |
| Thu 13 | Gypsy 2pm                         | ● |
|        | Greatest Musicals 8pm             |   |
| Fri 14 | A Streetcar Named Desire 8pm      |   |
| Sat 15 | The Secret Garden 2pm             |   |
|        | Brief Encounter 8pm               |   |
| Sun 16 | West End Musical Extravaganza 8pm |   |
| Tue 18 | Gypsy 8pm                         |   |
| Wed 19 | The Secret Garden 2pm             |   |
|        | A Streetcar Named Desire 8pm      | ● |

## July (cont.)

|        |                              |     |
|--------|------------------------------|-----|
| Thu 20 | A Streetcar Named Desire 2pm | ●   |
|        | Brief Encounter 8pm          |     |
| Fri 21 | Brief Encounter 8pm          |     |
| Sat 22 | The Secret Garden 2pm        |     |
|        | Gypsy 8pm                    | ●   |
| Tue 25 | Greatest Musicals 8pm        |     |
| Wed 26 | The Secret Garden 2pm        |     |
|        | Brief Encounter 8pm          |     |
| Thu 27 | Brief Encounter 2pm          | ● ● |
|        | A Streetcar Named Desire 8pm |     |
| Fri 28 | Gypsy 8pm                    |     |
| Sat 29 | The Secret Garden 2pm        |     |
|        | Gypsy 8pm                    |     |
| Sun 30 | Thank You for the Music 8pm  |     |

## August

|       |                                   |  |
|-------|-----------------------------------|--|
| Tue 1 | West End Musical Extravaganza 8pm |  |
| Wed 2 | The Secret Garden 2pm             |  |
|       | A Streetcar Named Desire 8pm      |  |
| Thu 3 | A Streetcar Named Desire 2pm      |  |
|       | Brief Encounter 8pm               |  |
| Fri 4 | Brief Encounter 8pm               |  |

## August (cont.)

|        |  |   |
|--------|--|---|
| Sat 5  | The Secret Garden 2pm                    |   |
|        | Gypsy 8pm                                |   |
| Tue 8  | Gypsy 8pm                                |   |
| Wed 9  | Gypsy 2pm                                |   |
|        | Brief Encounter 8pm                      |   |
| Thu 10 | Brief Encounter 2pm                      |   |
|        | Greatest Musicals 8pm                    |   |
| Fri 11 | A Streetcar Named Desire 8pm             |   |
| Sat 12 | The Secret Garden 2pm                    |   |
|        | A Streetcar Named Desire 8pm             |   |
| Sun 13 | West End Musical Extravaganza 2pm        |   |
| Tue 15 | A Streetcar Named Desire 8pm             |   |
| Wed 16 | A Streetcar Named Desire 2pm             | ● |
|        | Gypsy 8pm                                |   |
| Thu 17 | Brief Encounter 8pm                      |   |
| Fri 18 | To the Bone 7.30pm                       |   |
| Sat 19 | The Secret Garden 2pm                    |   |
|        | To the Bone 7.30pm                       |   |
| Wed 23 | To the Bone 7.30pm                       |   |
| Thu 24 | To the Bone 7.30pm                       |   |
| Fri 25 | Group Portrait in a Summer Landscape 8pm |   |
| Sat 26 | Group Portrait in a Summer Landscape 8pm |   |

## August (cont.)

|        |  |   |
|--------|--|---|
| Tue 29 | Group Portrait in a Summer Landscape 8pm |   |
| Wed 30 | Group Portrait in a Summer Landscape 2pm |   |
|        | A Streetcar Named Desire 8pm             | ● |
| Thu 31 | To the Bone 2.30pm                       |   |
|        | Brief Encounter 8pm                      | ● |

## September

|       |  |   |
|-------|--|---|
| Fri 1 | Sherlock Holmes 2pm                      |   |
|       | Gypsy 8pm                                |   |
| Sat 2 | Gypsy 2pm                                |   |
|       | Greatest Musicals 8pm                    |   |
| Sun 3 | Phil Cunningham & Aly Bain 8pm           |   |
| Tue 5 | Gypsy 8pm                                |   |
| Wed 6 | To the Bone 2.30pm                       |   |
|       | Group Portrait in a Summer Landscape 8pm |   |
| Thu 7 | Gypsy 2pm                                | ● |
|       | West End Musical Extravaganza 8pm        |   |
| Fri 8 | Sherlock Holmes 2pm                      |   |
|       | Brief Encounter 8pm                      |   |
| Sat 9 | Sherlock Holmes 2pm                      |   |
|       | A Streetcar Named Desire 8pm             | ● |



## September (cont.)

|        |                                      |        |
|--------|--------------------------------------|--------|
| Mon 11 | A Play, A Pie & A Pint               | 1pm    |
| Tue 12 | A Play, A Pie & A Pint               | 1pm    |
|        | Group Portrait in a Summer Landscape | 8pm    |
| Wed 13 | A Play, A Pie & A Pint               | 1pm    |
|        | Group Portrait in a Summer Landscape | 2pm ●  |
|        | Gypsy                                | 8pm    |
| Thu 14 | A Play, A Pie & A Pint               | 1pm    |
|        | Gypsy                                | 2pm    |
|        | A Streetcar Named Desire             | 8pm    |
| Fri 15 | A Play, A Pie & A Pint               | 1pm    |
|        | Sherlock Holmes                      | 2pm    |
|        | Brief Encounter                      | 8pm    |
| Sat 16 | A Play, A Pie & A Pint               | 1pm    |
|        | Sherlock Holmes                      | 2pm    |
|        | Brief Encounter                      | 2pm ●  |
|        | To the Bone                          | 7.30pm |
| Sun 17 | Greatest Musicals                    | 2pm    |
| Tue 19 | Gypsy                                | 8pm    |
| Wed 20 | Gypsy                                | 2pm    |
|        | Brief Encounter                      | 8pm    |
| Thu 21 | Sherlock Holmes                      | 2pm    |
|        | Brief Encounter                      | 2pm    |
|        | West End Musical Extravaganza        | 8pm    |

|        |                                      |        |
|--------|--------------------------------------|--------|
| Fri 22 | Sherlock Holmes                      | 2pm    |
|        | To the Bone                          | 2.30pm |
|        | A Streetcar Named Desire             | 8pm    |
| Sat 23 | A Streetcar Named Desire             | 2pm    |
|        | Group Portrait in a Summer Landscape | 8pm ●  |
| Tue 26 | Gypsy                                | 8pm    |
| Wed 27 | Gypsy                                | 2pm    |
|        | Group Portrait in a Summer Landscape | 8pm    |
| Thu 28 | Group Portrait in a Summer Landscape | 2pm ●  |
|        | Brief Encounter                      | 8pm    |
| Fri 29 | Brief Encounter                      | 2pm    |
|        | To the Bone                          | 7.30pm |
|        | A Streetcar Named Desire             | 8pm    |
| Sat 30 | A Streetcar Named Desire             | 2pm    |
|        | Gypsy                                | 8pm    |

Access performances key:

- Audio
- BSL
- Caption
- Relaxed

## Book now!

01796 484 626

[pitlochryfestivaltheatre.com](http://pitlochryfestivaltheatre.com)



## See more. Save more. Support more!

The more you see at Pitlochry Festival Theatre, the more you save.

Our Multi-Show Pass gives you access to the best prices we offer, and the chance to choose your shows at your convenience.

Are you one of our Theatre members? If so, you can also book tickets earlier than anyone else and have access to outstanding deals for our 6 shows in 6 days and our Full Season. Being a member will always give you priority booking, best prices and money-can't-buy benefits.

### See how much you can save with a Multi-Show Pass...

|  | Members | Non-Members |
|--|---------|-------------|
| Buy tickets for 5 or more shows and save | 25%     | 15%         |
| Buy tickets for 3 shows and save         | 20%     | 10%         |

## Exclusive Member offer

See 6 plays in 6 days for only £138, and 10 shows for only £199. This offer is only for our Members and must be purchased from Box Office by telephone or in person.



## Things you need to know

Book with confidence - exchanges and transfers are available throughout the summer 2023 season.

Savings are automatically applied at checkout when you book online.

You can also ring our friendly Box Office team for personalised assistance with booking shows.





**9 - 28 June 2pm & 7.30pm**

A welcome return of this enthralling new play from Martin McCormick, inspired by a monument near Dunning called 'The Maggie Wall', the site of a mysterious grave to a woman tried and executed in the 17th century for witchcraft. It's a collection of stones about 20 feet high, bearing the words in white lettering – 'Maggie Wall burnt here 1657 as a witch'.

*The Maggie Wall* explores the vulnerability of women and injustices suffered by them, as well as reminding us of a chapter of history in which predominately women were accused, tried and killed as suspected witches.

A co-production with Aberdeen Arts Centre.



**\*Advisory warning – we recommend this play for those aged 12 and over due to strong language and references to violence.**



**18 August - 29 September 2pm & 7.30pm**

Set in a secluded, rural cottage, *To the Bone* explores isolation and ownership, loss and longing, as Beth confronts her past and fights for her future.

*To the Bone* cuts to the marrow of memory and lays bare the powerful grip of place in a dynamic twist of love, grief, and betrayal.

An intense, incisive drama about haunting, healing, and what we call home.

**3 - 8 July 1pm**

THE WORLD FAMOUS  
A PLAY A PIE AND A PINT

Fi and her daughter Lu have never seen eye to eye, but Lu's ovaries are Fi's last remaining hope of a grandchild. When avowedly single Lu presents some 'interesting' choices of sperm donor, Fi knows she should probably keep her mouth shut. She has always been open-minded and definitely not racist...but is it too much to ask to have a grandchild that vaguely resembles you.

When a DNA test reveals some surprising results, Fi needs a new game plan.

*The Great Replacement* is a darkly comedic romp through intergenerational politics and the absurdities and peculiarities of race.

Co-presented with Macrobert Arts Centre and A Play, A Pie and A Pint.



**11-16 September 1pm**

THE WORLD FAMOUS  
A PLAY A PIE AND A PINT

Growing up is never simple but for Caitlin, there are extra complications: Caitlin was in care, then adopted, now her birth family want her in their lives. Things are spiralling out of control....

Caitlin and her Mum have been called into the Head Teacher's office. But she's done nothing wrong. Mr Marr's breath does stink, she was doing him a favour, everyone vapes and they can't prove she was anywhere near the fire alarm!

An uplifting and inspiring musical play, about identity, family and finding your way home.



# Amphitheatre

See pages 7-10 for  
performance dates



Written by **Frances Hodgson Burnett**  
Adapted by **Elizabeth Newman**

**7 July - 19 August**  
**2pm**

When orphaned Mary Lennox comes to live at her uncle's great house on the Yorkshire Moors, she finds it full of secrets. The mansion has nearly one hundred rooms, and at night, she hears the sound of crying down one of the long corridors, eventually tracking it down to her cousin Colin who has spent his entire life in bed, unable to walk.

One day Mary finds a key that leads her to a garden held locked for years and completely overgrown. Mary and her friend Dickon bring the garden back to life and the flourishing garden brings joy back to the house and those living in it.

Elizabeth Newman's new adaptation of one of the most delightful and enduring classics of children's literature is set in the theatre's beautiful amphitheatre and celebrates the power of transformation and healing through nature.

**1 - 22 September**  
**2pm**

Back by popular demand, Pitlochry Festival Theatre presents this bold adaptation of the 1887 story *A Study in Scarlet* by Arthur Conan-Doyle, marking the first appearance of Sherlock Holmes and Dr Watson, the most famous detective duo in literature.

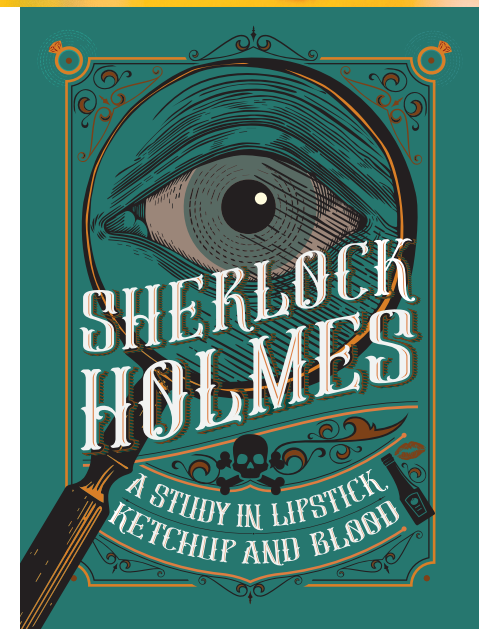
In a blasted world, two survivors – a doctor and an actor – pass the time by staging their favourite story salvaged from the flames. When tensions arise around casting, more than dead bodies start to surface...

Audiences will be enthralled by this riveting play brought to life in the Amphitheatre, nestled in the Explorers Garden within the shadow of Ben-YVrackie.

A co-production with OVO.



**\*Advisory warning – we recommend this play for those aged 10 and over due to strong language.**



Written by **Arthur Conan Doyle**  
Adapted by **Lesley Hart**

Booking early is the best way to get the best  
seats at the best prices.

Hundreds of tickets for less  
than £25 for **every** show and  
concessions for Under 16s from  
£10. Bring your group of 10 or  
more and save up to 20%!

Summer Season 2023

## Book now!



**01796 484 626**  
**pitlochryfestivaltheatre.com**



## Backstage Tours

Our fascinating guided tours take you behind  
the scenes to reveal the secret spaces and unseen  
areas of this unique Theatre.

**Booking in advance is advised, although not essential.**  
**Ask at the Box Office for more information.**

Summer Season 2023

15



# Concerts

See pages 7-10 for  
performance dates



## Greatest Musicals of All Time

23 May - 17 September  
2pm & 8pm

Join us for a celebration of some of the greatest songs from shows we all know and love, taking you on a magical journey through unforgettable musicals.

In the comfort of our auditorium, travel the world through song and let us transport you to the glitz and glamour of Broadway and the West End. Think Rodgers and Hammerstein, Cole Porter, Stephen Sondheim, John Kander and Fred Ebb, Jerry Herman...



## West End Musical Extravaganza

25 May - 21 September  
8pm

Encore, encore! Take your seats for another helping of smash hits from the musical theatre stages of London's famous West End.

If you love *Oklahoma*, *West Side Story*, *Evita* and *My Fair Lady*, you're in for a treat. Our talented performers will whisk you away to that magical world of the musical, where understudies get their big break, just waking up is an excuse for a song, and everything always works out in the end!



## 80s Live!

2 July 8pm

You've made it through the wilderness, somehow, you've made it through and now we're never gonna give you up!

Get ready as we bring you the biggest 80s party show to tour the UK - 80s Live! We will be heading down the Atlanta Highway, so bring your jukebox money and get ready to Jitterbug.

The show includes hits *Girls Just Wanna Have Fun*, *Edge of Heaven*, *Tainted Love*, *Love Shack*, *Living on a Prayer*, *The Final Countdown*, *Don't You Want Me*, *Baby, Relax*, *Never Gonna Give You Up*, *It's Raining Men*, *Rio* and the list goes on.

This is 80s Live!



## Thank You for the Music!

30 July 8pm

Calling all Dancing Queens: this is your night to say, Thank You for the Music!

This international smash-hit tribute show brings all ABBA's number one hits to the stage in a production like no other. The hugely popular show, now in its 20th year, with a brand-new show for 2023, combines the unmistakable harmonies, colourful costumes and dazzling performances by an all-star cast.

Join us for the party of the year as we bring you all the hits, including *Waterloo*, *Dancing Queen*, *Mamma Mia*, and many many more!

Thank You for the Music! For without a song or a dance, what are we?



## Aly Bain & Phil Cunningham

3 September 8pm

Together Aly Bain and Phil Cunningham have established themselves as the epitome of excellence in the world of traditional music.

With their musical magic and quick-witted humour they will pull your emotional strings one moment and have you falling off the seat with laughter the next.



PITLOCHRY  
FESTIVAL  
THEATRE

01796 484626

PH16 5DR

[pitlochryfestivaltheatre.com](http://pitlochryfestivaltheatre.com)

Pitlochry Festival Theatre  
is a Company Limited by  
Guarantee and registered in  
Scotland Number SC029243.  
Scottish Charity Number SC013055.

Thanks to



ALBA | CHRUTHACHAIL

